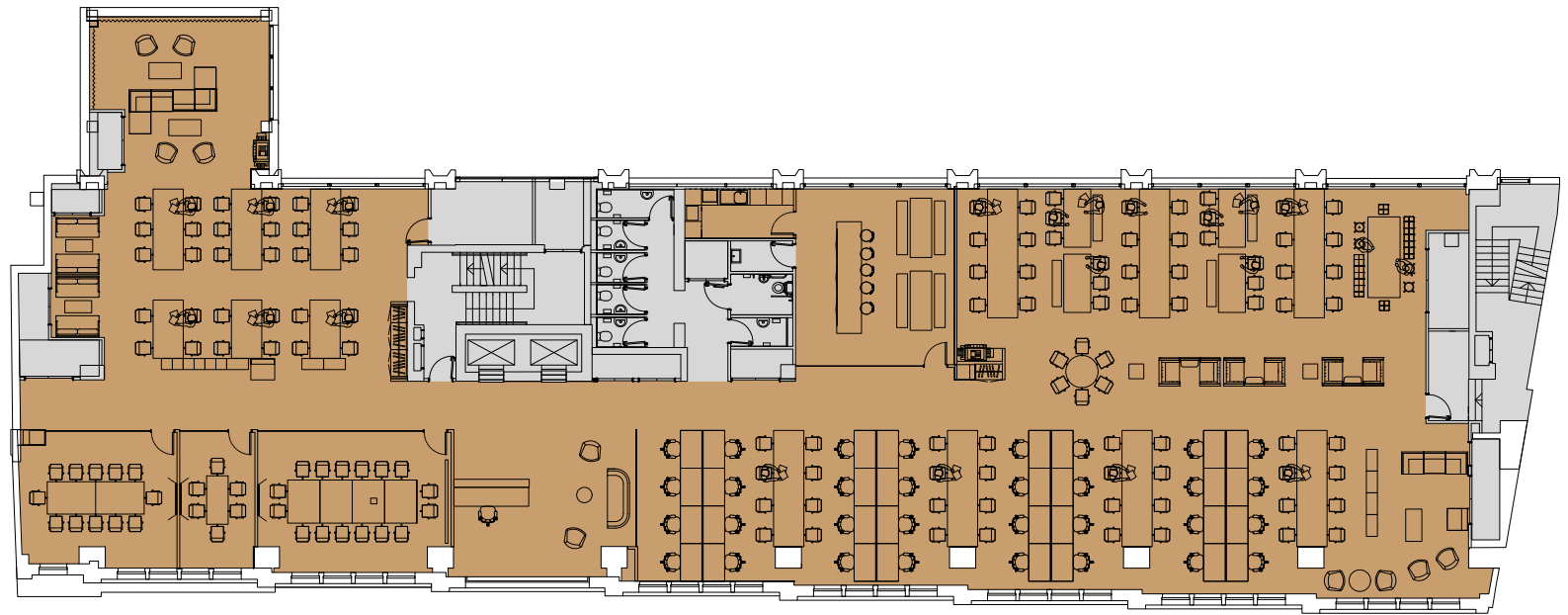


THE STILLS



Fourth Floor Open Plan - option 1 7,481 sq ft / 695 sq m

Open plan desks	118
Reception	1
Hot desks	20
Project space	2
Collaboration table	2
16 person meeting room	1
12 person meeting room	1
6 person meeting room	1
Teapoint / breakout	1
Total working positions	139



- Office
- Reception
- Terrace
- Retail
- Core

For indicative purposes only. Not to scale.



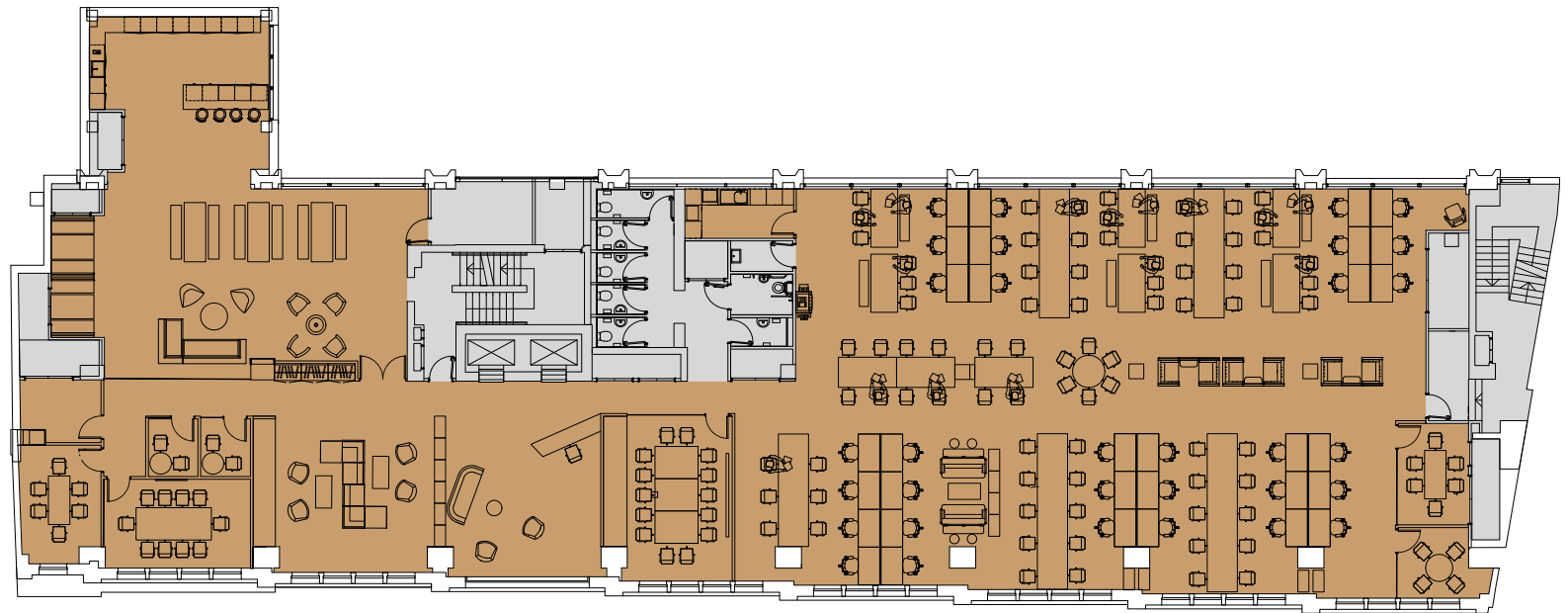
THE STILLS



Fourth Floor Open Plan - option 2

7,481 sq ft / 695 sq m

Open plan desks	88
Reception	1
Hot desks	30
Collaboration table	1
14 person meeting room	1
10 person meeting room	1
6 person meeting room	2
4 person meeting room	1
Teapoint / breakout	1
Phone booth	2
Informal meeting area	1
Total working positions	119



- Office
- Reception
- Terrace
- Retail
- Core

For indicative purposes only. Not to scale.

