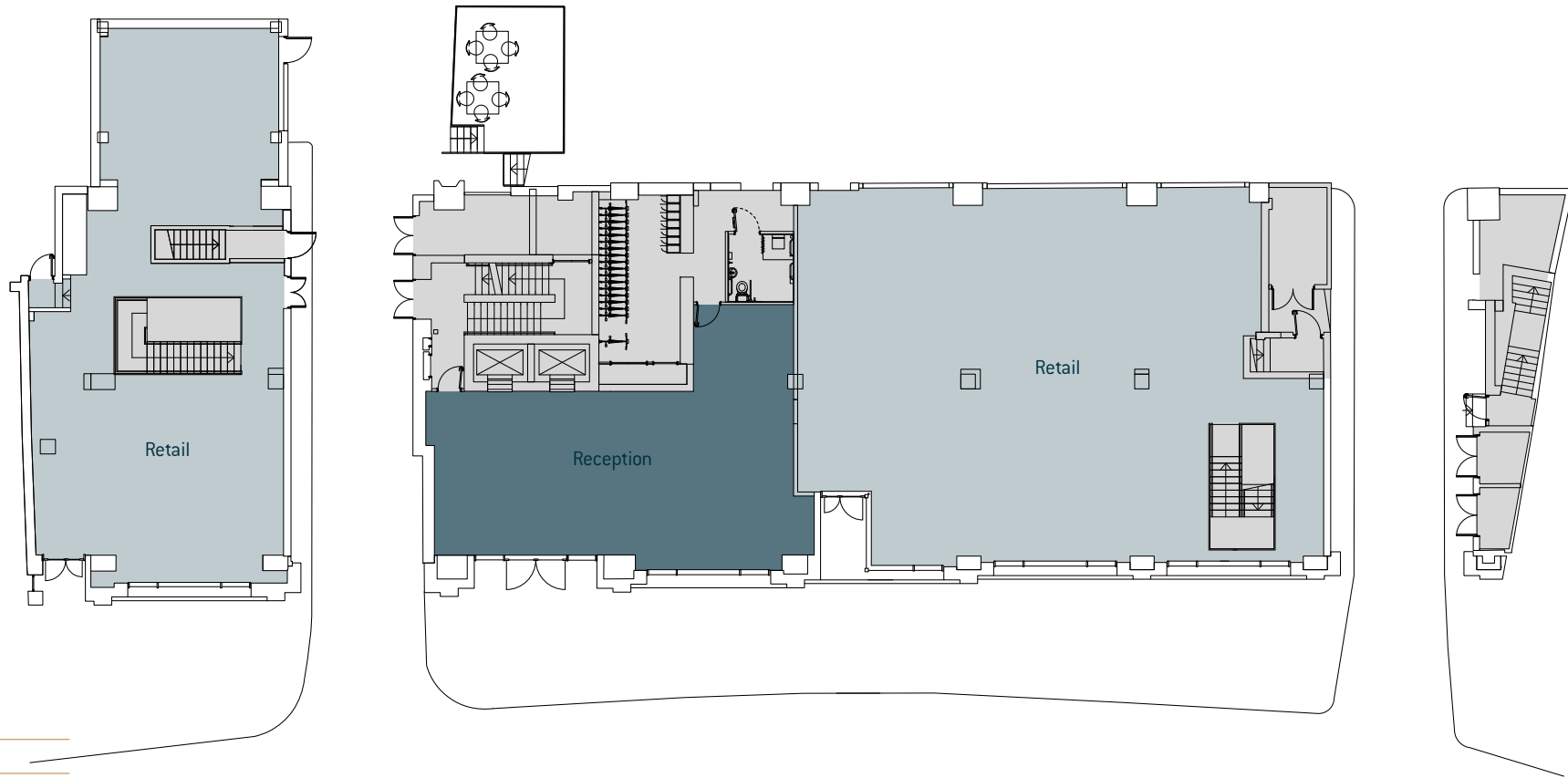


THE STILLS



Ground Floor



- Office
- Reception
- Terrace
- Retail
- Core

Turnmill Street

For indicative purposes only. Not to scale.

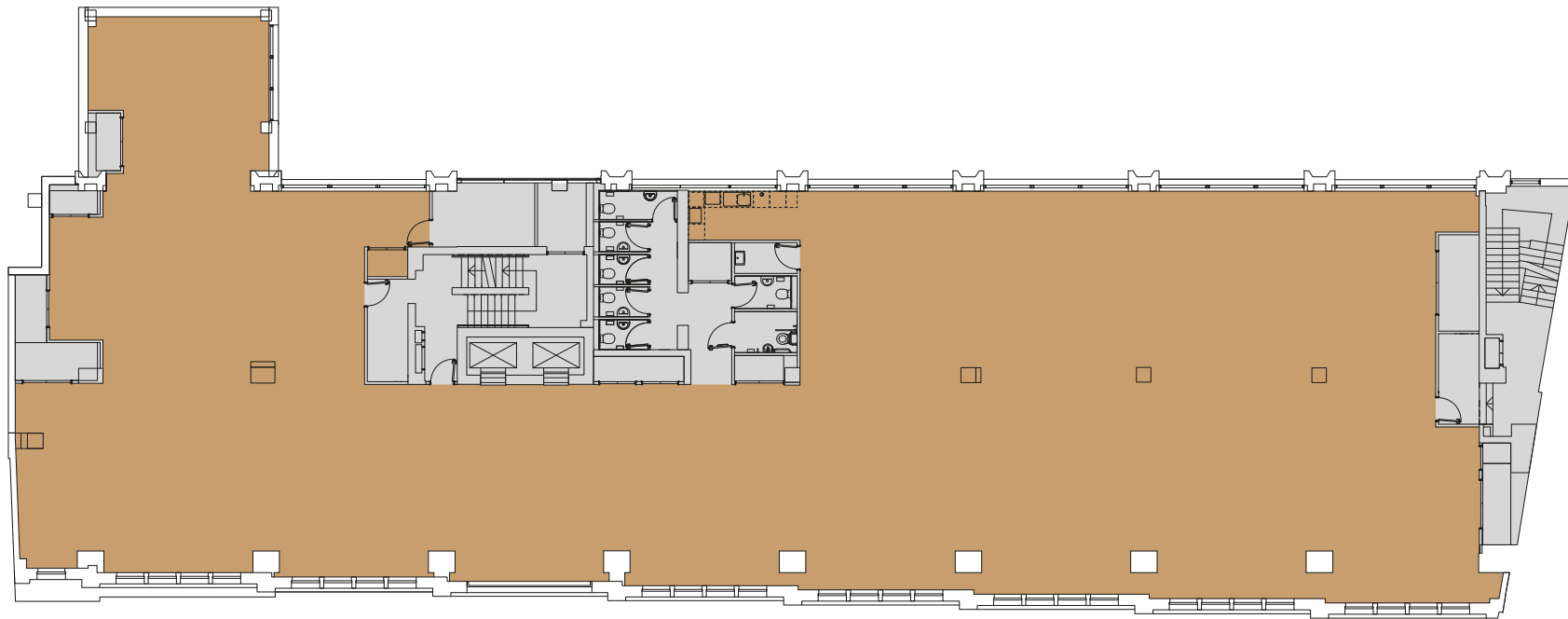


THE STILLS



First Floor

7,470 sq ft / 694 sq m



- Office
- Reception
- Terrace
- Retail
- Core

For indicative purposes only. Not to scale.

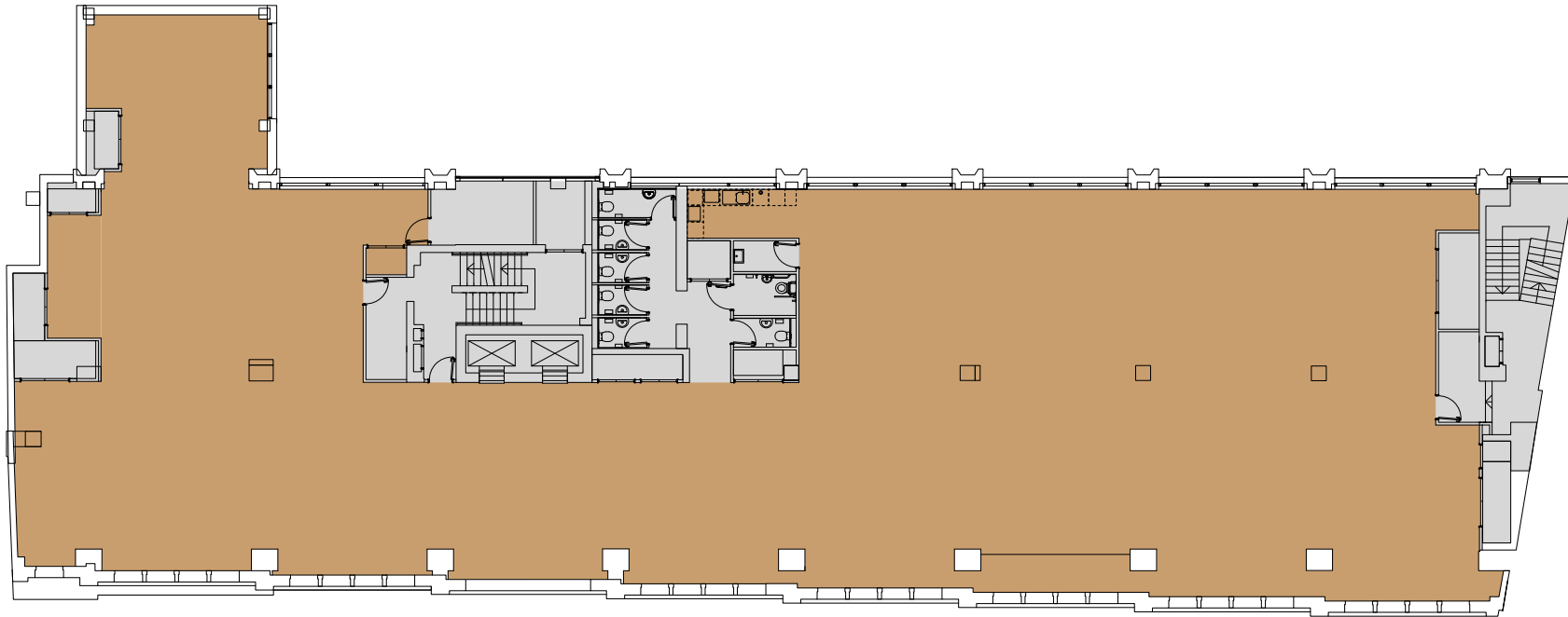


THE STILLS



Second Floor

7,481 sq ft / 695 sq m



- Office
- Reception
- Terrace
- Retail
- Core

For indicative purposes only. Not to scale.

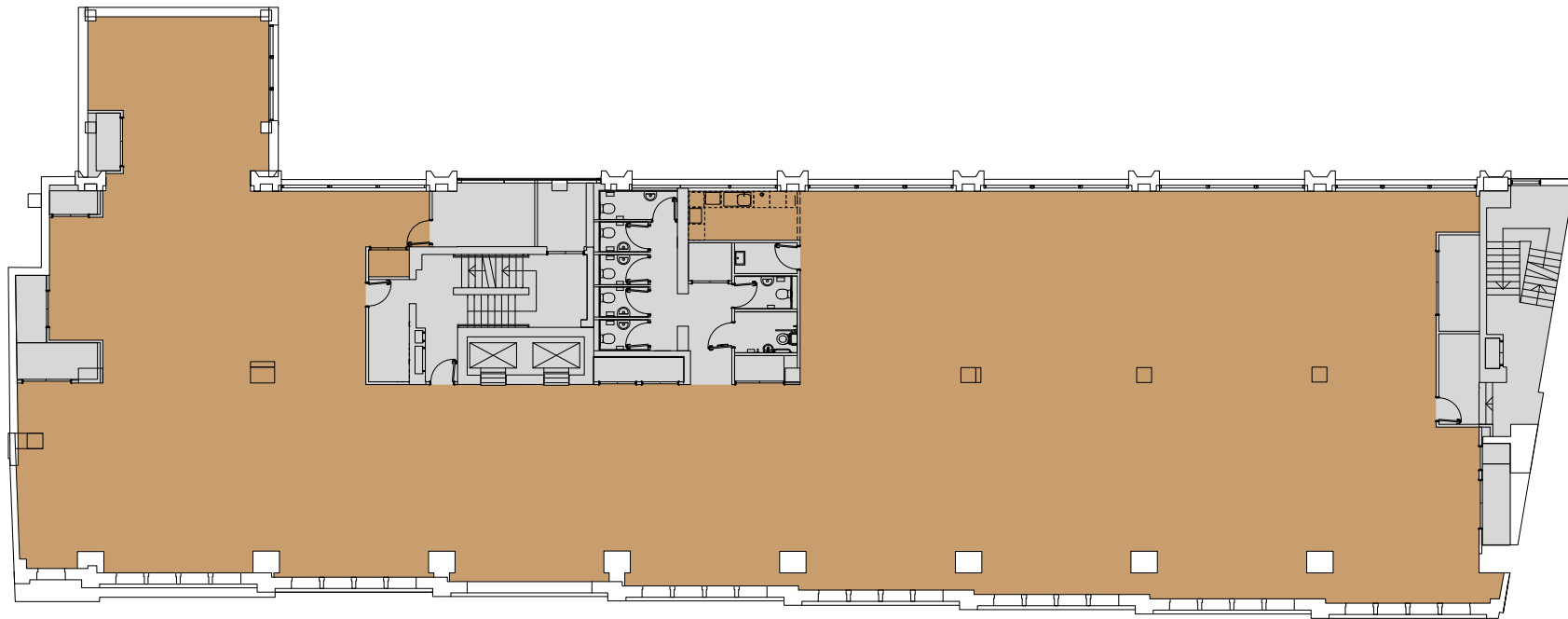


THE STILLS



Third Floor

7,470 sq ft / 694 sq m



- Office
- Reception
- Terrace
- Retail
- Core

For indicative purposes only. Not to scale.

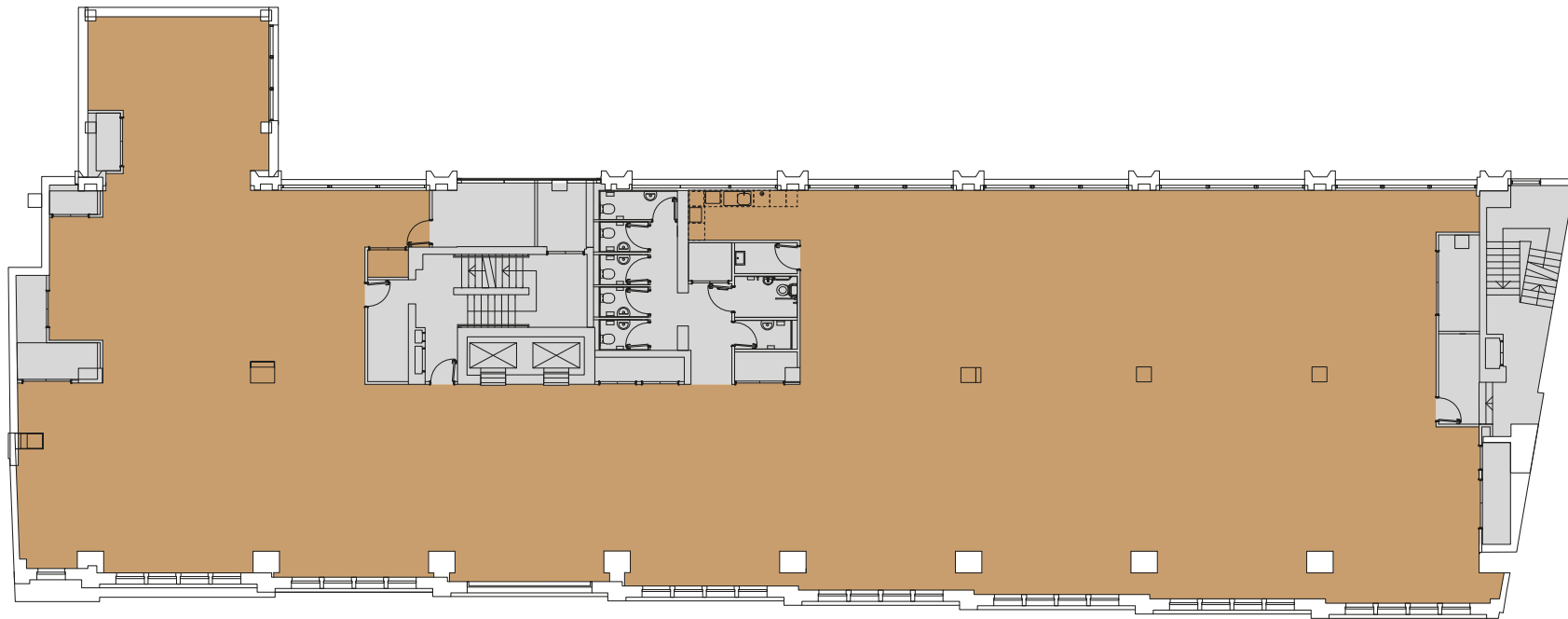


THE STILLS



Fourth Floor

7,481 sq ft / 695 sq m



- Office
- Reception
- Terrace
- Retail
- Core

For indicative purposes only. Not to scale.

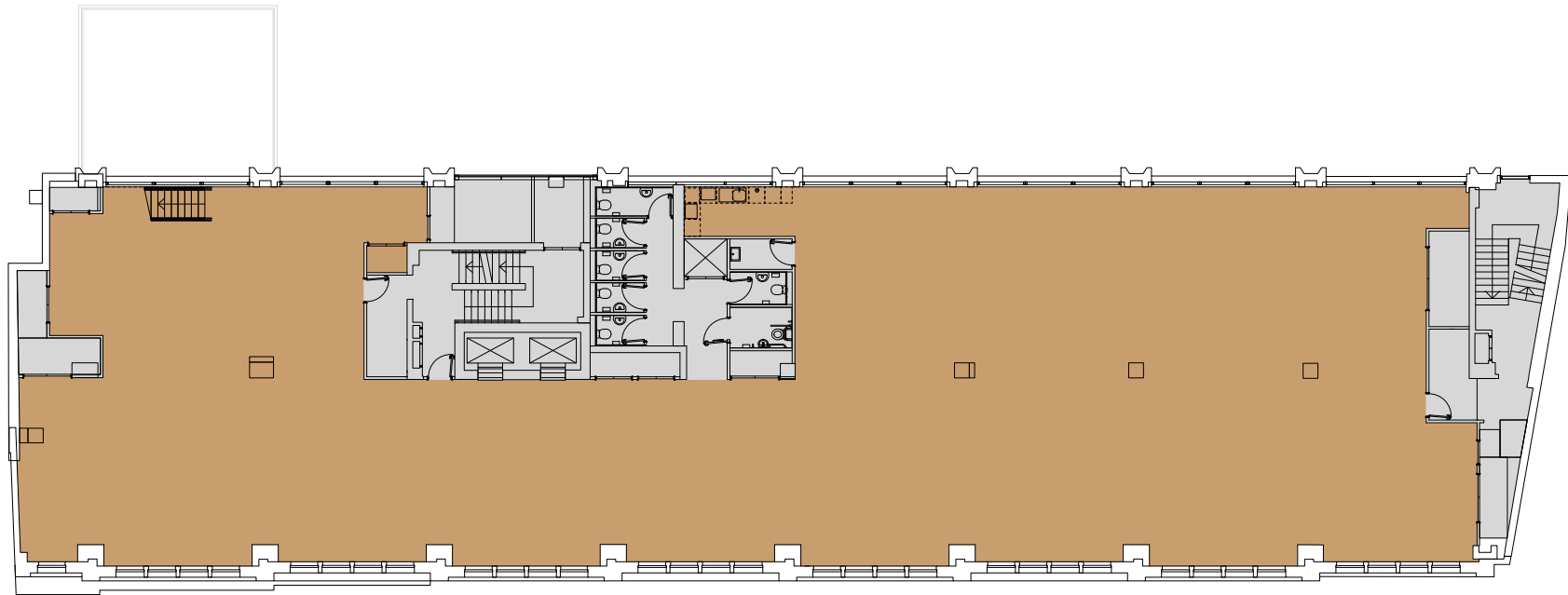


THE STILLS



Fifth Floor

6,749 sq ft / 627 sq m



- Office
- Reception
- Terrace
- Retail
- Core

For indicative purposes only. Not to scale.

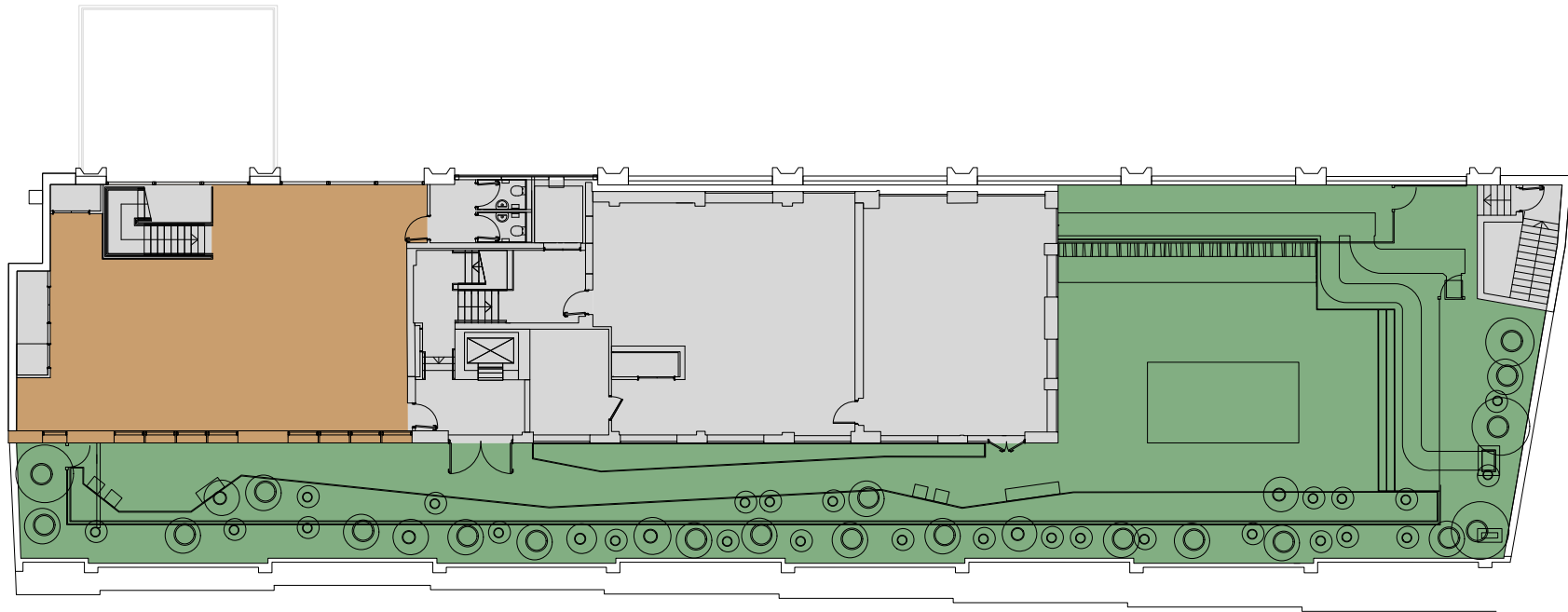


THE STILLS



Mezzanine Floor

1,216 sq ft / 113 sq m



- Office
- Reception
- Terrace
- Retail
- Core

For indicative purposes only. Not to scale.

